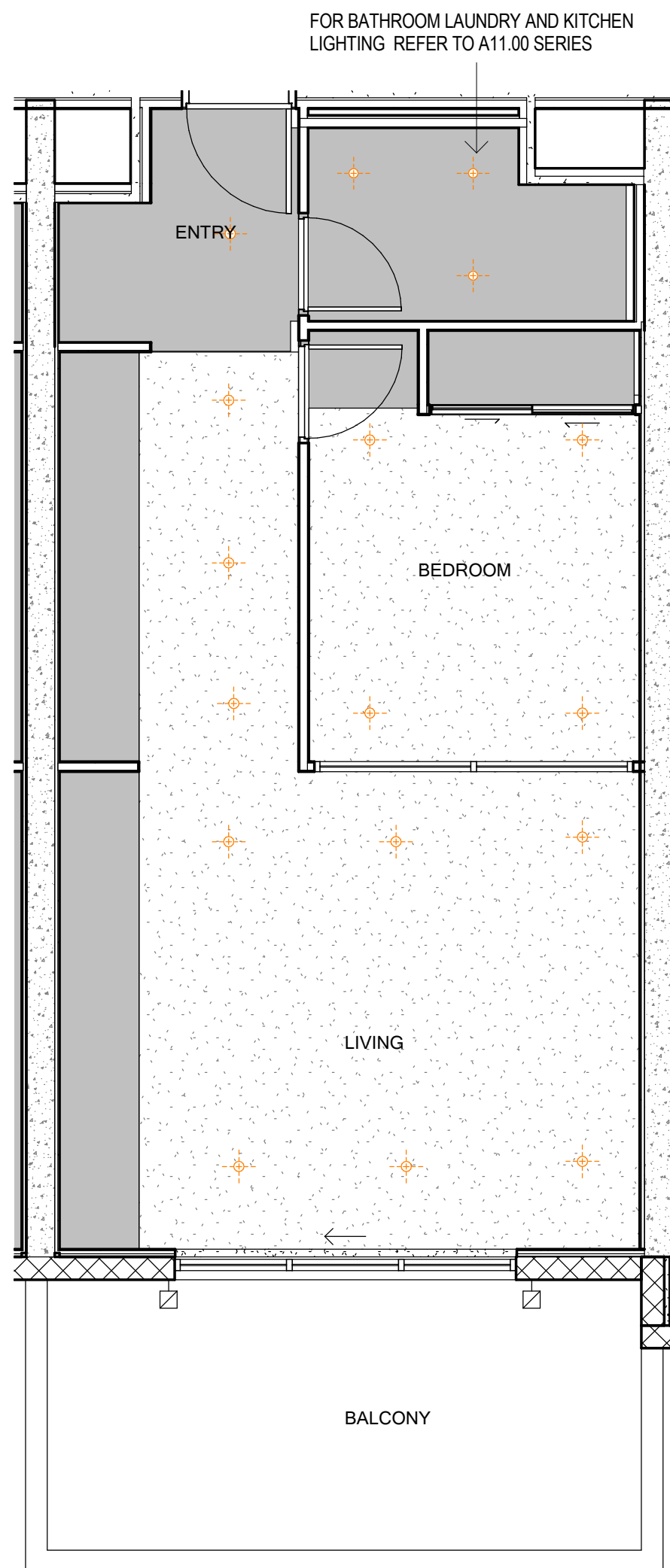


1 Floor Plan - Type 1J
Type 1JM Similar (Mirrored)



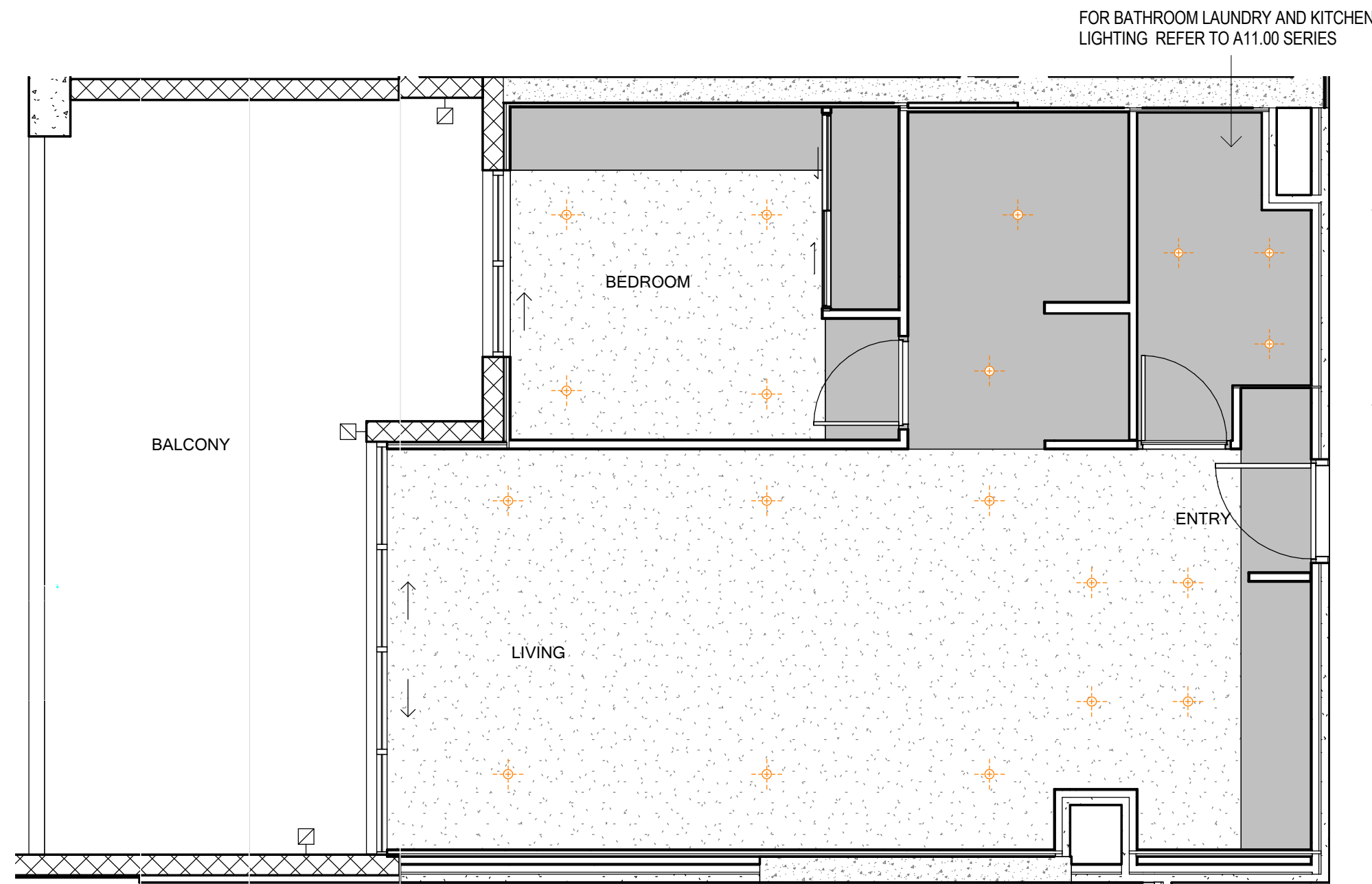
3 Reflected Ceiling Plan - Type 1J
Type 1JM Similar (Mirrored)

UNIT NUMBERS FOR UNIT LAYOUT TYPE 1J

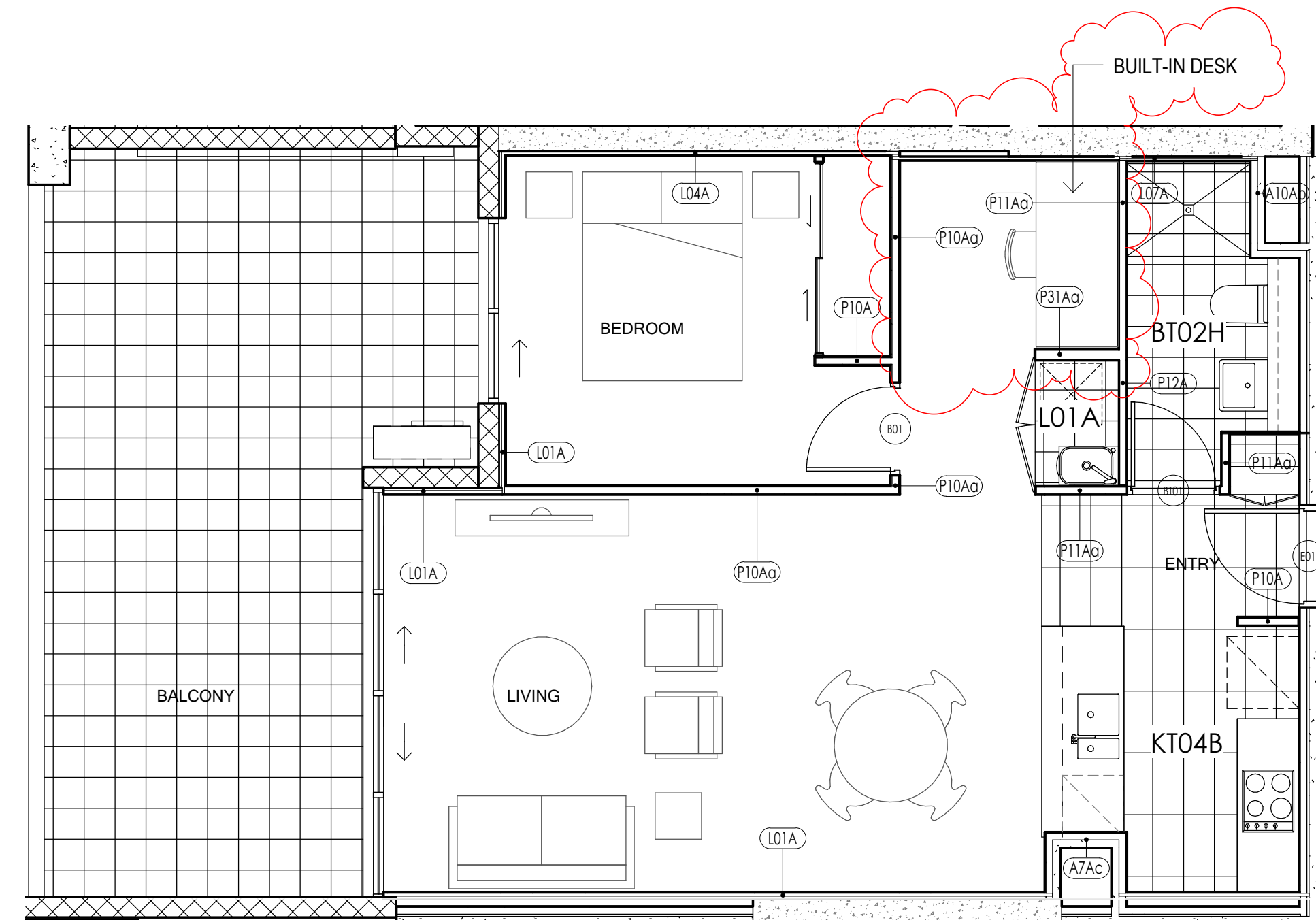
B.1.12
Total: 1

UNIT NUMBERS FOR UNIT LAYOUT TYPE 1JM

B.1.13
Total: 1



4 Reflected Ceiling Plan - Type 1K
Type 1KM Similar (Mirrored)



2 Floor Plan - Type 1K
Type 1KM Similar (Mirrored)

UNIT NUMBERS FOR UNIT LAYOUT TYPE 1K

C.1.01
C.G.01
Total: 2

UNIT NUMBERS FOR UNIT LAYOUT TYPE 1KM

C.1.09
C.G.09
Total: 2

GENERAL NOTES:

REFER TO WALL SETOUT DRAWINGS SERIES A2.00 SERIES AND WALL TYPE DETAILS A8.00 SERIES FOR INTERTENANCY WALLS AND WALL THICKNESSES
WALL LINING FOR THE FREE STANDING CONCRETE WALLS TO BE L03A UNLESS NOTED OTHERWISE.
REFER TO STRUCTURAL ENGINEER'S DRAWINGS FOR STRUCTURAL SIZES, DETAILS AND CONSTRUCTION JOINTS.
UNIT TYPE IS TYPICAL BUT CAN SLIGHTLY VARY IN LENGHT OR WIDTH INCLUDING STRUCTURAL COMPONENTS USED FOR EACH BUILDING AND LEVEL.
THIS DRAWING IS TO BE READ IN CONJUNCTION WITH SERVICES CONSULTANTS DOCUMENTATION AND THE ACOUSTIC, BASIX, BCA, ACCESS AND FINISHES AND FIXTURE SCHEDULES AND REPORTS.
FOR BALCONY AND FACADE WALLS REFER TO A2.00 GENERAL ARRANGEMENT PLANS AND LAYOUTS.

WHERE THERE IS A DISCREPANCY BETWEEN ANY REQUIREMENTS OF THE REPORTS AND SCHEDULES AND THESE DRAWINGS, THE ARCHITECT MUST BE CONSULTED.

CEILINGS MUST BE FLUSH SET AND LEVEL ACROSS ALL DOOR HEADS

BULKHEADS REQUIRED FOR MECHANICAL VENTILATION DUCTS TO BE CONFIRMED BY MECHANICAL ENGINEER. MAX WIDTH 500-700MM.

BULKHEADS REQUIRED FOR HYDRAULIC PIPES TO BE CONFIRMED BY HYDRAULIC ENGINEER. MAX WIDTH 200MM.

IN ALL OTHER CONDITIONS CEILING HEIGHTS TO SOFFIT OF BULKHEAD MUST ACHIEVE 2400MM CLEARANCE AFFL.

FOR LIGHT FITTINGS SPECIFICATION REFER TO ELECTRICAL CONSULTANTS DOCUMENTATION AND SCHEDULE

REFER TO A4.00 SERIES FOR UNIT TYPE LAYOUTS AND LOCATIONS

SCHEDULE & LAYOUT SPECIFY REQUIREMENTS & SHOW EXTENT ONLY. DETAILING REQUIREMENTS NEED TO BE IN ACCORDANCE WITH MANUFACTURES DETAILS & SPECIFIC RECOMMENDATIONS.

LEGEND:

INDICATES EXTENT OF 2700 CEILING ABOVE FINISHED FLOOR LEVEL. SQUARE SET UNO.
RONDPO P50 SHADOW LINE STOPPING ANGLE WHERE ABUTTING PERIMETER WALLS

INDICATES EXTENT OF 2400 CEILING ABOVE FINISHED FLOOR LEVEL. SQUARE SET UNO.
RONDPO P50 SHADOW LINE STOPPING ANGLE WHERE ABUTTING PERIMETER WALLS

INDICATES EXTENT OF PLASTERBOARD PELMET NOM. 50MM ABOVE CEILING. SQUARE SET AT 2750 ABOVE FINISHED FLOOR LEVEL AT BALCONY SLIDING DOORS ONLY.

DOWNLIGHT

EXTERNAL BALCONY WALL LIGHT

DOOR TAG, REFER TO 13.77 DOOR SCHEDULE

WALL TYPE TAG, REFER TO DWG 8.00 & 8.11 FOR WALL TYPES

ABT00 DENOTES ACCESSIBLE BATHROOM TYPE,

BT00 DENOTES BATHROOM TYPES

KT00 DENOTES KITCHEN TYPES

L00 DENOTES LAUNDRY TYPES

LC00 DENOTES LINEN TYPES

FOR KITCHEN TYPES REFER TO A11.30 SERIES

FOR BATHROOM TYPES REFER TO A11.40 SERIES

FOR LAUNDRY, LINEN AND WARDROBE TYPES REFER TO A11.44

CEILING TYPE
FLUSH SET 13MM PLASTERBOARD CEILINGS AND BULKHEADS SUSPENDED FROM SLAB SOFFIT. (50MM INSULATION TO CEILING AREAS FOR BULKHEADS AND OPEN SPACE AREAS ABOVE INCLUDING TREATMENT OF PIPES AS INDICATED IN ACOUSTIC REPORT)

FLUSH SET 13MM MOISTURE RESISTANT PLASTERBOARD CEILINGS AND BULKHEADS SUSPENDED FROM SLAB SOFFIT WITH 50MM INSULATION PER ACOUSTIC SPECIFICATION (TO WET AREAS ONLY)

TEXTURED PAINT TO BALCONY SOFFIT REFER TO EXTERNAL FINISHES SCHEDULE

FINISHES OPTIONS

DUSK SCHEME FINISHES - REFER TO FINISHES SCHEDULE

TFB1- TIMBER FLOOR (OPTION 1) FOR LIVING AREAS AND BEDROOM OR
TF1- TILED FLOOR (OPTION 2) FOR LIVING AREAS AND C1 CARPET FOR BEDROOMS
TF3- TILED FLOOR FOR WET AREAS

DAWN SCHEME FINISHES-REFER TO FINISHES SCHEDULES

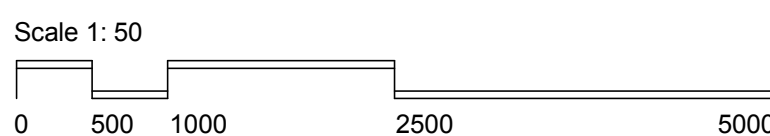
TFB1-TIMBER FLOOR (OPTION 1) FOR LIVING AREAS AND BEDROOM OR
TF2-TILED FLOOR (OPTION 2) FOR LIVING AREAS AND C2 CARPET FOR BEDROOMS
TF4-TILED FLOOR FOR WET AREAS

ALL FLOOR FINISHES SHOULD BE MEASURED FROM THE FINISHED FLOOR LEVEL.
FOR OPTION 1 THE TILED FLOOR AT THE ENTRY OF EACH APARTMENT WILL RAMP UP TO ACHIEVE THE OVERALL THICKNESS OF THE TIMBER FLOOR.

REFER DWG A11.81 FOR THRESHOLD DETAILS

D	DA Design Condition Revisions	BZ	02-11-2016
C	Revised Tender Issue-Modification to Suit Revised Design of Building A	HT	26-08-2016
B	For Tender Issue	GK	29-04-2016
A	Issued for Information	DA	06-04-2016
No.	AMENDMENT	CHK	DATE

DO NOT SCALE from this drawing. Use given dimensions only.
Check all dimensions on the job prior to commencement of shop drawings or fabrication. Any discrepancies are to be referred to the Architect/Engineer/Designer prior to commencement of work



Client:
KAPAU HOLDINGS PTY LTD

A207, 339 SUSSEX STREET, SYDNEY, NSW 2000 AUSTRALIA
Tel: 9299 9987 Fax: 9262 6827

Project:
**BURWOOD GRAND
MIXED USE RESIDENTIAL DEVELOPMENT**

BELMORE ST., CONDER STREET, WYNNE AVENUE
BURWOOD NSW

Architects:
KANNFINCH

Kann Finch Group Pty Ltd. 50 Carrington St Sydney NSW 2000
ACN 139 614 798 Tel +61 2 9299 4111 www.kannfinch.com
Nominated Architect: Stephen Jamison NSW ARB Reg No 5108

Drawing:
**UNIT LAYOUT TYPES 1J &
IJM & 1K & 1KM**

Drawing No:
A8.14

Issue:
D

Scale: 1: 50 Date: 01/2016 Drawn: SG Checked: IS Proj. No: 6335
Plot Date: 21/12/2016 5:02:36 PM
CAD File: C:\Users\ben.zheng\Documents\8335 Belmore St Burwood CONTROL - Central_benny.zheng.dwg